

AutoSave Change Management

Support for Wonderware InTouch

PRODUCT OVERVIEW

The AutoSave suite of products provides the software tools needed to manage all your automation programs. It controls and tracks the changes to your industrial programmable devices and program sources including Wonderware InTouch projects.

AutoSave works directly with the Wonderware InTouch software to offer you both an interactive environment and background monitoring, resulting in a comprehensive change management solution. You have complete control over your device programs including:

- Secure application Offline Edits
- Upload Download, Comparison
- Historical Tracking
- Automatic Change Notification
- Quick Disaster Recovery
- On-going Editor Version Updates

CLIENT / SERVER / AGENT

The AutoSave Wonderware InTouch module plugs into the AutoSave client which is installed on each user workstation. An AutoSave server acts as the master control center that coordinates all change-related programming activities and stores PLC project files, and an agent provides distributed processing efficiencies for the server.

ARCHIVED CONTENTS

The content of the Wonderware InTouch project is comprised of the WindowViewer, WindowMaker, Application Logic, Key Script, Data Change Script, Conditional Script, and various INI files along with the CSV (output from the dbdump.exe and multiple backup versions of the files. The entire project is saved and restored to the client or agent whenever needed for subsequent use.

SUPPORT LOCAL DEVELOPMENT AND/OR NAD OPERATIONS

Use AutoSave to provide core functionality (security, automated archives, reporting, automatic launch of WindowMaker via Offline edit button, etc. to support the local development client or support the Network Application Development (NAD) environment. Both environments support scheduled comparisons with optional automatic update, uploads, and downloads in addition to the core functionality.

SECURED PROGRAM ACCESS

The AutoSave client interface allows users to access the AutoSave functions using a login and password. At login, the AutoSave server determines the level of access to the different folders and programs permitted to the user.

VERSION CONTROL

When the user requests a program via AutoSave, the file becomes locked and indicates who has the file checked out. The system denies access to others while the program is in use. When the user completes editing and saves the changes, AutoSave prompts for a revision note, creates a new current copy, relegates the previous current copy to a numbered ancestor, and unlocks the program.

UPLOAD

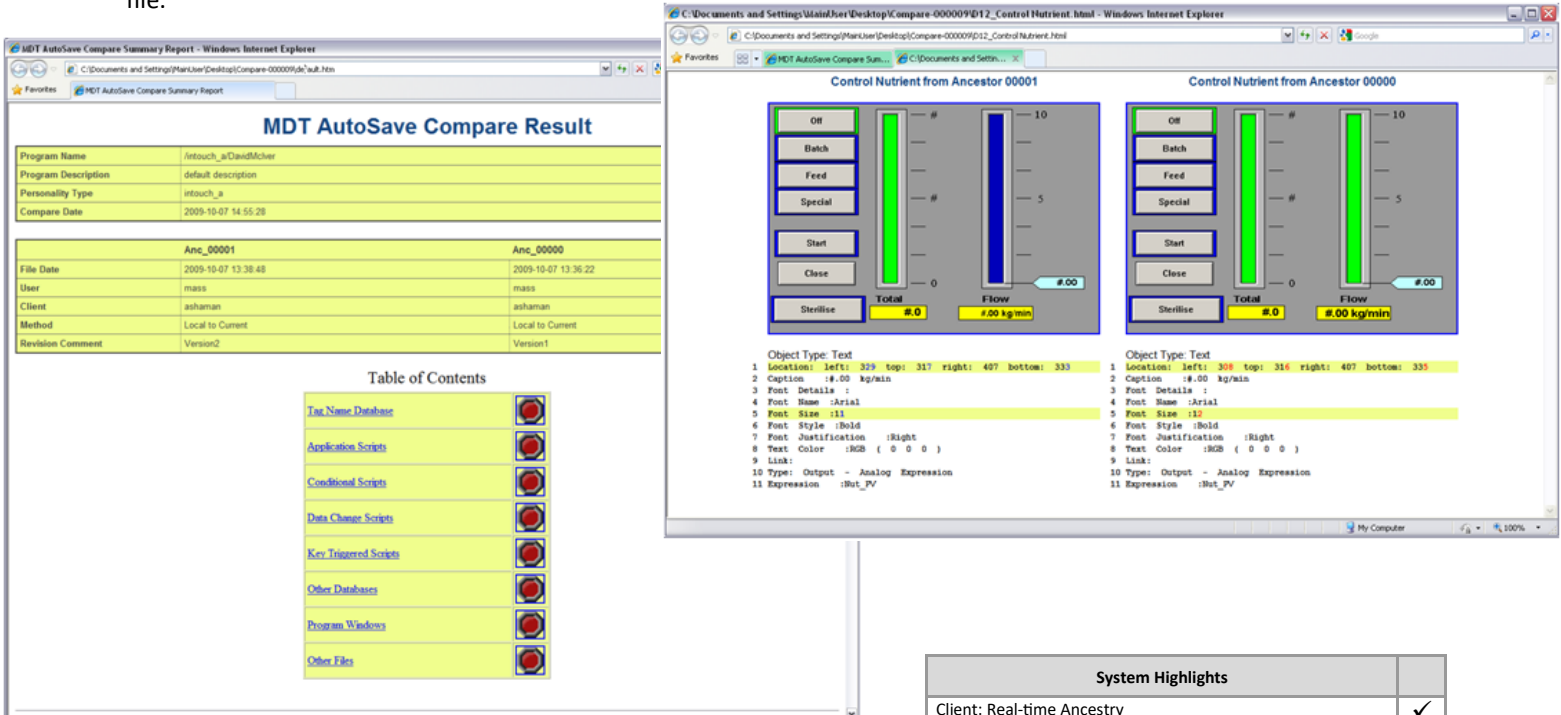
Upload first clears the client or agent's local program contents, copies all the files from the HMI (except those specifically excluded) to the PC and compresses them, saving them to the server and creating a new current copy.

DOWNLOAD

Using the local copy of Wonderware InTouch, a client-based download to the device enables the user to select the current copy or any other available revision with which to update the processor. In all cases, AutoSave creates a new current copy.

COMPARISON FEATURES

The InTouch module supports demand and scheduled comparisons. Employing Wonderware's 'dbdump.exe' to format the files, AutoSave comparisons are done on a file-by-file basis, detecting files missing from one of the program revisions being compared, determining which files are present in both revisions that are different, and performing a detailed textual comparison of the changed files. For InTouch v10.1 and higher installations, client compares attempt a detailed window compare by default while agent compares are not defaulted to do so but can be so set through the module's .ini file.



COMPARISON ON DEMAND

Compare any two revisions of the program - current, local, ancestor, or version - to each other or to the device. This comparison is initiated by a user and may be performed from any client computer with access to the device program.

AUTOMATED COMPARISON

The module supports scheduled, unattended comparisons of flexibly configured groups of programs. Using Wonderware InTouch software installed on the agent to perform the actual upload, AutoSave can compare the device copy to the current copy or compare the current copy to a selected 'permanent' version. This module supports the AutoUpdate feature to update the server with a new current copy if the current copy differs from the device.

NOTIFICATION

Notification email is automatically sent to selected users when comparisons or changes are made.

SUPPORTED DEVICES

Wonderware InTouch programming software supports the Wonderware family of HMIs.

System Highlights	
Client: Real-time Ancestry	✓
Server: Auto Unattended Operation	✓
Agent: Parallel/Distributed Processing	✓
Secured Program Access	✓
Version Control w/file compression	✓
Device Upload	✓
Device Download	✓
Client Highlights	
Compare	✓
Editor Launch	✓
Server / Agent Highlights	
Time-Base Scheduling	✓
AutoCompare	✓
AutoNotify	✓
AutoUpdate	✓